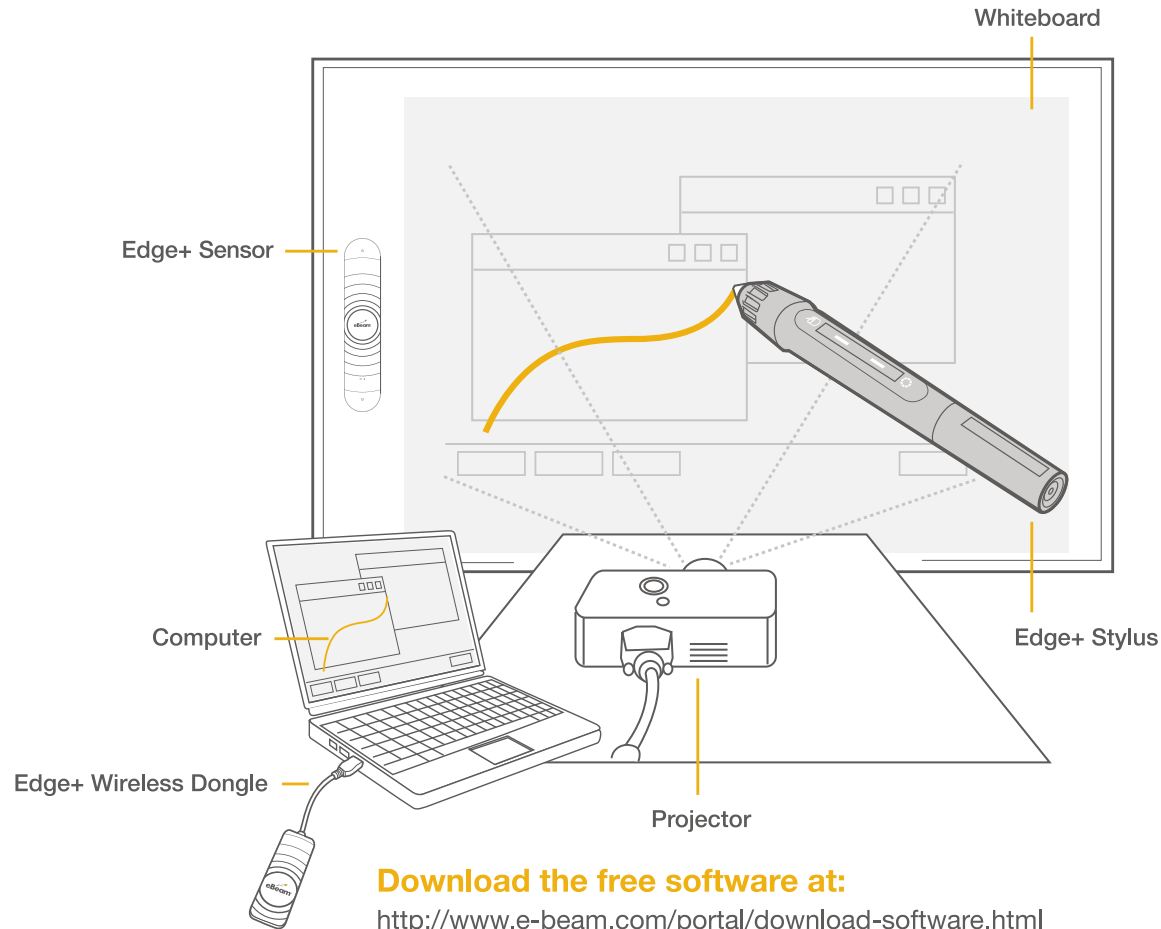




Quick Setup



Register:

Register now, using the serial number on your receiver to receive special product offers, which may include an extended warranty, free software or other benefits. Product offers contingent upon meeting Luidia requirements.

portal.e-beam.com

Support:

e-beam.com/support

Software Download:

e-beam.com/portal/download-software.html

Connect:

 twitter.com/eBeam

 search for eBeam

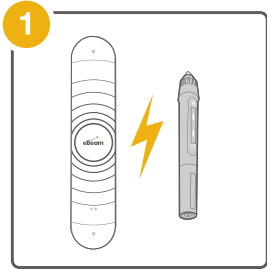
 youtube.com/LuidiaTech



www.e-beam.com | 1.888.99.eBeam

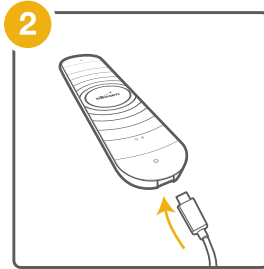
Luidia Inc. is the creator of eBeam® interactive technology that helps the world capture and share content. The company's products are utilized by organizations of all sizes, with hundreds of thousands of users across multiple industries and geographies.

©2015 Luidia, Inc. All rights reserved. eBeam and the Luidia logo are registered trademarks of Luidia, Inc. Other product names and logos are the property of their respective owners.

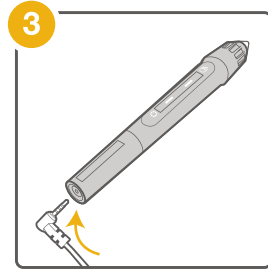


Fully charge the Edge+ Sensor and stylus before first use. A full charge takes approximately 3 hours for each.

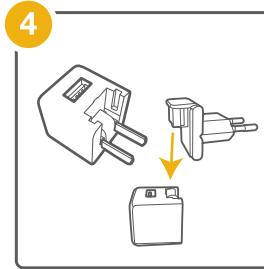
Once fully charged, your devices can be used continuously for up to 8 hours.



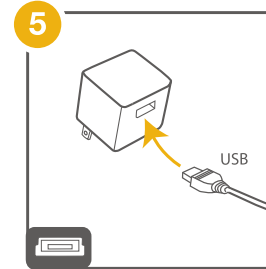
Use the micro USB cable to charge your Edge+ Sensor with any USB power adapter or the one provided in the package.



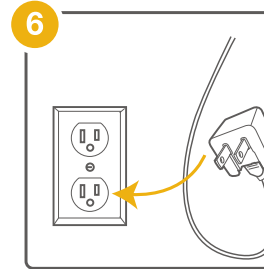
Use the 1m USB charging cable to charge your Edge+ Stylus with any USB power adapter or the one provided in the package.



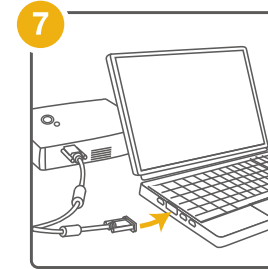
The USB power adapter that is provided in the package also comes with several international adapters. If necessary, select the proper international plug type and attach it to the USB power adapter.



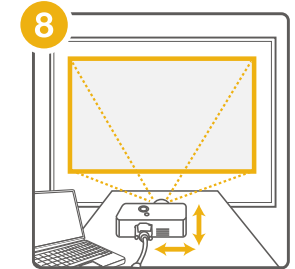
Connect the micro USB cable or the stylus charging cable to the USB power adapter.



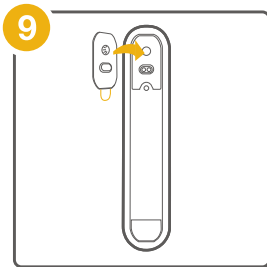
Connect the power supply to the wall to begin charging.



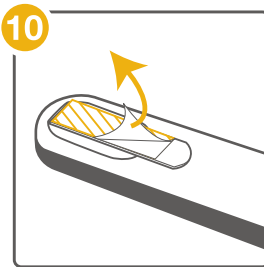
Connect your projector to your computer.



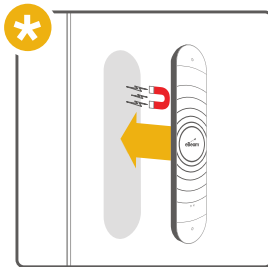
Turn on your projector and align/focus the image on the projected surface.



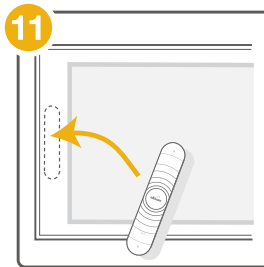
Place a mounting plate onto the back of the sensor with the Command adhesive side facing out.
**(See note for magnetic mounting option)*



Peel the Command adhesive backing from the sensor.

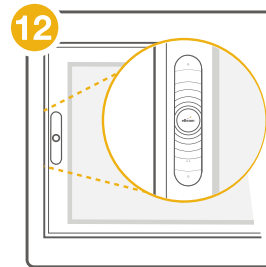


**Note:* You also can place the sensor directly onto magnetic surfaces without using the plate.

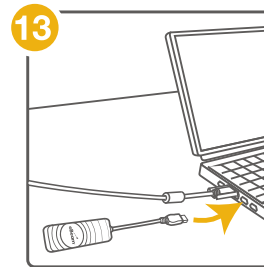


Hold the sensor and prepare to place it carefully in the indicated location.

Allow a 5cm margin between the sensor and writing area.

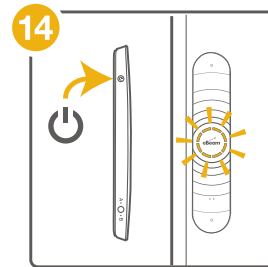


Place the sensor so that it is centered vertically on the projected surface, parallel to the projection edge.

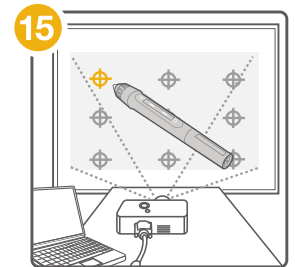


Connect the Edge+ Wireless Dongle to your computer's USB port. Install and run the eBeam software.

Download at:
<http://www.e-beam.com/portal/download-software.html>



Press the power button on the side of the sensor to turn it on. The sensor light will blink, indicating that it is ready to connect wirelessly.



After the eBeam software is launched, calibrate the system.
Congratulations!
Your eBeam Edge+ system is now ready for use.